



th
FORM



West Kirby
Grammar School



West Kirby
Grammar School

Welcome

Thank you for considering WKGS Sixth Form as your next place to study. Sixth form years are an exciting and vital chapter in your academic and personal development, so it is important to take some time to choose the best environment for you.

Choice is at the heart of our philosophy here at WKGS Sixth Form. Throughout our lives, the choices we are presented with, and the choices we make, help to shape our futures and define who we become. We passionately believe that every student should benefit from a wealth of choice. That's why we offer such a broad curriculum of subjects alongside an array of enrichment and leadership opportunities.

Working together, we will help you to explore possibilities and make the right choices in pursuit of your dreams and ambitions, whatever they may be. Welcome to WKGS Sixth Form – the sixth form of choice.

Simeon Clarke

HEADTEACHER





CONTENTS

BELONGING	06	ECONOMICS	26	PHILOSOPHY, RELIGION & ETHICS	39
SUPPORT	08	ENGLISH LANGUAGE	27	PHYSICAL EDUCATION	40
AN INSPIRING ENVIRONMENT	10	ENGLISH LITERATURE	28	PHYSICS	41
LEADERSHIP	12	FILM STUDIES	29	POLITICS	42
TO STAND OUT	14	FOOD SCIENCE & NUTRITION	30	PRODUCT DESIGN	43
CONTINUITY	16	FRENCH	31	PSYCHOLOGY	44
TO BE YOU	18	FURTHER MATHS	32	SPANISH	45
FINE ART & GRAPHICS	20	GEOGRAPHY	33	TEXTILES	46
ART TEXTILE DESIGN	21	GERMAN	34	THEATRE STUDIES	47
BIOLOGY	22	HISTORY	35	WIDER LEARNING OPPORTUNITIES	48
BUSINESS	23	LATIN	36		
CHEMISTRY	24	MATHS	37		
COMPUTER SCIENCE	25	MUSIC	38		

choose belonging

We all need a sense of belonging. The communities of which we are part help us to grow; to forge connections and build enduring relationships. At WKGS Sixth Form you will be part of a friendly, close-knit community in which your unique talents and individuality will be celebrated.

At West Kirby we will support you to quickly find your voice as an individual and become a valued member of our Sixth Form family.





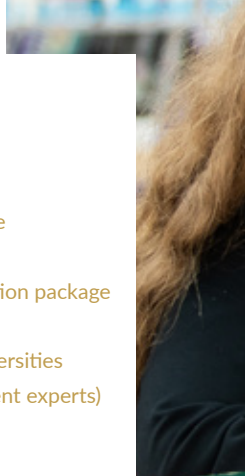
choose support

Whilst you'll enjoy more independence than you had in school, we also provide the structure and support which are vital in helping every student to develop and thrive.

You will join a form group with an experienced Form Tutor who will support your progress throughout your time with us. They will log your achievements, guide you through your UCAS preparation and help you to explore different employment pathways. Additional one-to-one support will be provided by a dedicated Sixth Form Mentor.

We offer

- a comprehensive induction programme
- learning support and mentoring
- small tutor groups with excellent pastoral care
- guidance evenings
- a bespoke UCAS and apprenticeship preparation package
- university taster days
- master classes with industry and various universities
- careers advice (internally and from independent experts)

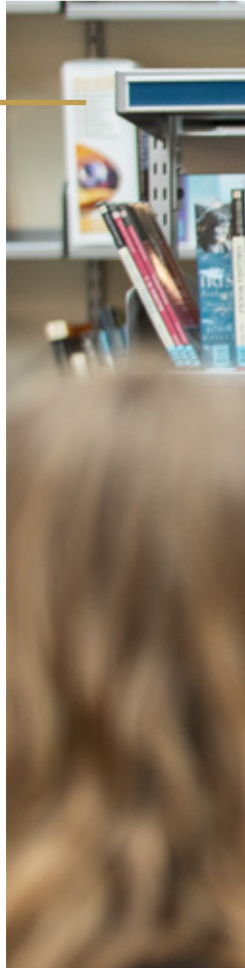




choose
an inspiring
environment

You'll be learning and socialising in our Sixth Form Centre, complete with modern teaching areas, dedicated media suites, common rooms and kitchen facilities. As well as full use of our IT facilities, you can bring your own device and connect to our wi-fi network.

We have a 'business casual' dress code in line with modern workplace practices, helping you to feel relaxed but still professional.





choose leadership

Leadership skills are important in all aspects of life. Genuine leadership opportunities help young people to grow in confidence, develop a sense of responsibility and build a positive mindset.

You'll have the opportunity to apply for a range of positions of responsibility, all of which play a central role in the WKGS community. These include Head Prefect, Deputy, Prefect or House Captain. You can also support and inspire our younger children as a Peer Mentor,

or help them to uncover new talents by running an extra-curricular club.

A large percentage of our students participate in the Duke of Edinburgh's Award scheme and many go on to achieve Gold and become Young Leaders. You'll get the opportunity to organise or participate in some of our many House competitions around a range of activities such as debating, dance, drama, music, hockey and rounders.



choose to stand out

To gain a place at your chosen university or to land that dream job, you need to stand out from the crowd. We offer a wide range of exciting enrichment opportunities which will see you grow as a person and help your applications to shine.

Volunteering in the local community will enable you to make a real difference, meet new people and learn new skills. Participation in Young Enterprise will provide a practical introduction to the world of business and equip you with key employability skills. The Rotary Interact

Club focuses on projects that support the local community and promote international understanding.

You will also have opportunities for international travel and to immerse yourself in a wide range of subject areas, from languages to geology to political debate.

More than 90% of our students secure their first choice of university



choose continuity

but plenty that's new

After GCSEs, some young people prefer to continue their academic journey in more familiar school-based surroundings whilst others prefer a change. Our Sixth Form offers the best of both worlds. Whilst an integral part of the West Kirby Grammar School community, our purpose-built Sixth Form centre and 'business casual' dress code create an important degree of separation, helping you to make a fresh start on the next exciting stage of your journey.





choose to be you

As one of the region's top-performing sixth forms, we'll help you to achieve your academic potential. But WKGS Sixth Form is about so much more.

We want you to discover you – your talents, your passions, your dreams. We'll help you to build confidence, develop resilience, to learn from successes and failures.

We're sure that your years at WKGS Sixth Form will be amongst your most enjoyable, but more importantly they will help you to grow as a young person and equip you for a bright and exciting future.



choose

fine art & graphics

This is a highly creative and exciting course through which you will develop a portfolio of work to support a degree or career in architecture, fine art or any other design-related discipline. Students engage in a wide range of artistic tasks across drawing, painting, mixed media, sculpture, installation, photography and printmaking.

You will be encouraged to broaden your artistic skills through a series of workshops which will help you to work independently, developing your own ideas whilst investigating a wide range of traditional and contemporary artists. There will be opportunities to visit art galleries and exhibitions throughout the course.

The graphics industry offers many exciting careers and this course will give you in-depth exposure to the different aspects of graphic communication. You will develop skills and understanding across a variety of visual disciplines, studying the work of contemporary artists and designers.

Your ideas and designs will be produced using both traditional and new technologies. If you enjoy being creative and developing your own design work, this course will enable you to produce a unique portfolio of highly-original final pieces.



SCAN FOR MORE INFO

TEACHING CONTACT

Miss S Ogden

✉ sogden@wkgs.net

EXAM BOARD

AQA

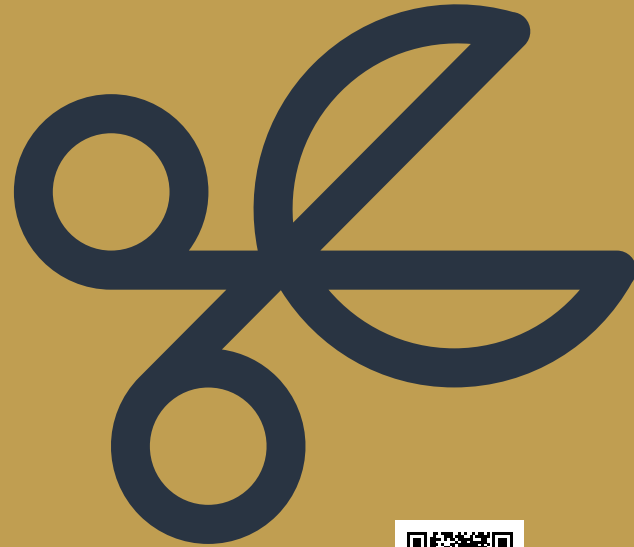
ENTRY REQUIREMENTS

Grade 6 in Art-related GCSE course or Portfolio

choose art textile design

This is a dynamic course through which you will develop a creative portfolio of work to support a degree or career in textile design, fashion design or any other design-related discipline. The syllabus is fashion-based in Year 12, making this an ideal qualification if you have an interest in fashion and textile design.

You will be introduced to a variety of experiences as you explore a range of textile and fashion techniques. If you enjoy being creative and developing your own design work, this course enables you to produce highly original final pieces and gain a deeper understanding of contemporary artists and designers.



SCAN FOR MORE INFO

TEACHING CONTACT

Miss S Ogden

✉ sogden@wkgs.net

EXAM BOARD

AQA

ENTRY REQUIREMENTS

Grade 6 in Art-related GCSE course or Portfolio

choose biology

Biology is the study of life around us. Once understood, it becomes a technology with endless possibilities – from understanding the huge ecological impact of plastics and the conservation of endangered species through to new DNA technologies and medical applications.

If you have a genuine interest and enthusiasm for the world around you, biology could be the course for you. You will gain a firm scientific foundation, developing practical, analytical and problem-solving skills through regular practical work. These skills are invaluable throughout life and highly sought-after by universities and employers alike.

Throughout the A-level programme you will have plenty of opportunities to enrich the curriculum and support the school's wider science community.



SCAN FOR MORE INFO

TEACHING CONTACT

Mrs G Fairclough

✉ gfairclough@wks.net

EXAM BOARD

AQA

ENTRY REQUIREMENTS

Grade 6 in GCSE Biology or in Combined Science and Maths

choose business

Students taking this course should have a deep interest in the world of business and the events which shape it, from consumer trends to government intervention. A natural curiosity and desire to learn about the mechanics of business is essential.

Topics we will study include ethical business choices, problem-solving through critical analysis and understanding how entrepreneurial approaches can help to solve the needs and wants of modern society. We will be investigating the global strategies of multinational corporations and the importance of careful financial management.



SCAN FOR MORE INFO

TEACHING CONTACT

Mrs M Roberts

✉ mroberts@wkgs.net

EXAM BOARD

Pearson (Edexcel)

ENTRY REQUIREMENTS

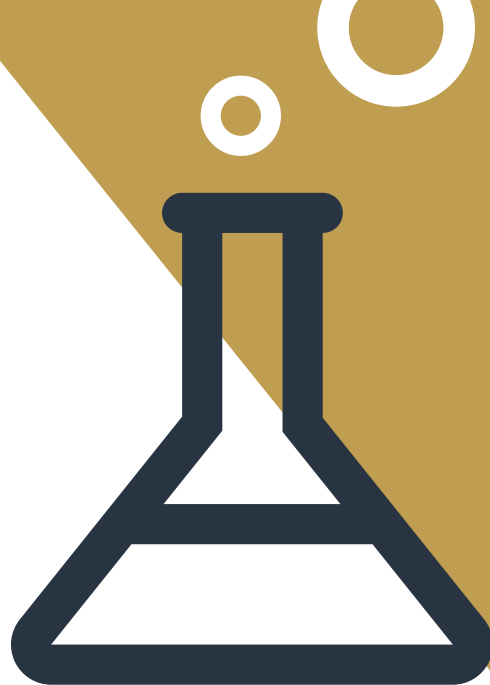
Grade 6 in GCSE Maths

choose chemistry

Chemistry shapes our world. Medicines, materials that allow us to communicate electronically and the clothes we wear, all demonstrate chemistry's power to improve our lives. It helps us to develop solutions for the big challenges we face – for example, chemists identified the role of greenhouse gases in climate change, and developed drugs for previously untreatable diseases.

If you have a genuine interest and enthusiasm for the world around you, chemistry could be the course for you. You will gain a firm scientific foundation, developing practical, analytical and problem-solving skills through regular practical work. These skills are invaluable throughout life and highly sought-after by universities and employers.

Throughout the A-level programme you will have plenty of enrichment opportunities and also support the school's wider science community.



SCAN FOR MORE INFO

TEACHING CONTACT

Mr M Woods

✉ mwoods@wkgs.net

EXAM BOARD

AQA

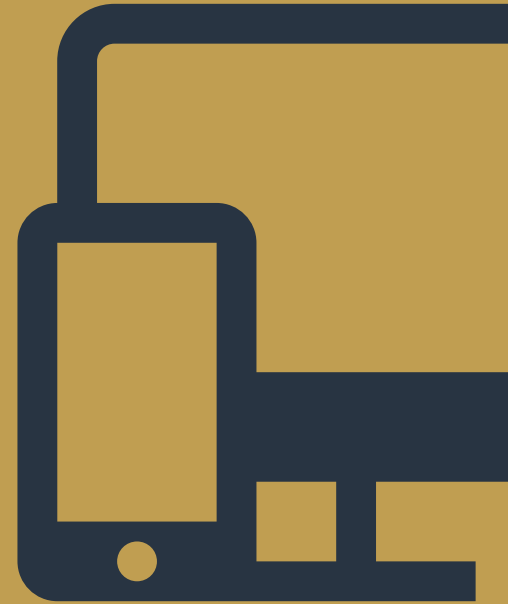
ENTRY REQUIREMENTS

Grade 6 in GCSE Chemistry or in Combined Science.

choose computer science

Computer science is a modern, exciting subject which encourages students to think creatively, logically and critically whilst developing advanced problem-solving skills. This is the course for you if you are passionate about computers and want to learn about programming, computer architecture, networks and many other areas.

You will develop a working knowledge of the technologies and principles behind modern computer systems, developing transferrable skills such as analysis, critical thinking and problem-solving. You will learn to code in industry standard languages such as Python, PHP, SQL and JavaScript.



SCAN FOR MORE INFO

TEACHING CONTACT

Mr W Douthwaite

✉ wdouthwaite@wkgs.net

EXAM BOARD

OCR

ENTRY REQUIREMENTS

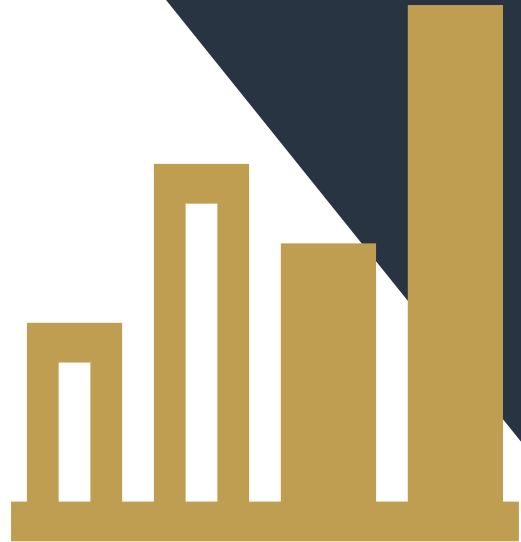
Grade 6 in Computing GCSE or Grade 6 in Maths and keen interest in programming and computing technologies

choose economics

Economics is the study of how societies, governments, businesses, households and individuals make choices and allocate their scarce resources. Many of the world's most significant social problems have an economic dimension.

Students taking this course should have an investigative and enquiring mind. We will debate global issues, explore and present alternative courses of action, keep up to date with economic trends, and research local, national and international economic and business environments.

The study of economics is an excellent way to acquire problem-solving skills and develop a logical, ordered way of looking at issues.



SCAN FOR MORE INFO

TEACHING CONTACT

Mrs M Roberts

✉ mroberts@wks.net

EXAM BOARD

Pearson (Edexcel)

ENTRY REQUIREMENTS

Grade 6 in GCSE Maths

choose english language

Language is woven into every aspect of our lives. It connects us all and helps to define our identity and relationships with others. Language has a fascinating and colourful history and its uses (and abuses) can create fierce, passionate debate.

Many of us never stop and take notice of language, so we are not always aware of its importance: the words and grammar we use have a direct influence on our thoughts and actions, and even on what we believe is real.

By studying English Language in depth, you will develop critical awareness and gain invaluable communication and analytical skills for your future working life.



SCAN FOR MORE INFO

TEACHING CONTACT

Miss J Macaulay

✉ jmacaulay@wkgs.net

EXAM BOARD

AQA

ENTRY REQUIREMENTS

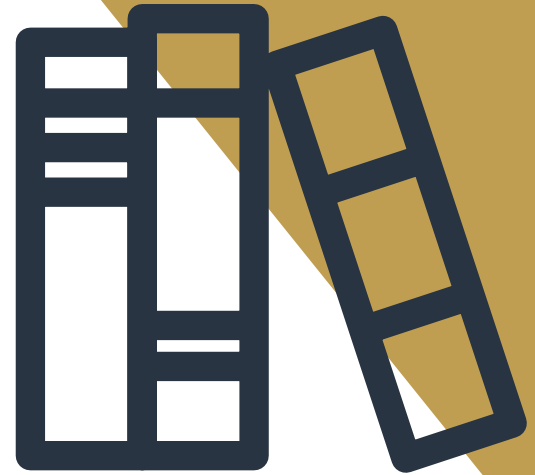
Grade 6 in GCSE English Language

choose english literature

If you enjoy reading across a wide range of literature, then this could be the course for you. Studying novels, plays and poetry feeds the imagination, helping you to formulate new perspectives and ideas whilst challenging your beliefs and values.

You will be encouraged to fully engage with texts and think critically and analytically about what you are reading. You will learn how to formulate your own opinions and interpretations, and how to communicate these ideas effectively, not just in essays and exams, but during class discussions which make up a large part of the course.

Studying English Literature develops your written and verbal communication skills, your ability to use words to your advantage and to think and respond analytically. Students might go on to university to study a range of related subjects such as history, sociology, psychology, drama, theatre studies or law.



SCAN FOR MORE INFO

TEACHING CONTACT

Mrs L Pinnington

✉ lpinnington@wkgs.net

EXAM BOARD

EDUQAS

ENTRY REQUIREMENTS

Grade 6 in English Literature

choose film studies

Film plays an important role in society. Over the decades it has grown as a powerful vehicle for culture, education, leisure and propaganda. Film studies deals with various theoretical, historical, and critical approaches to films.

This course is ideal for students who want to explore how and why films are made. Through exposure to a wide range of film-making processes and techniques, you will develop technical and creative skills that will help you to construct and deconstruct films. Coursework allows you to experiment with a variety of film-making technology and editing software. You will be expected to think independently and expand

your knowledge outside of the classroom by reading about and watching films.

This course will help you to develop a wide range of transferable skills including visual and verbal communication, analysis and problem solving. Students can go on to study film, TV or media at university, leading to a range of careers in the media and creative industries.



SCAN FOR MORE INFO

TEACHING CONTACT

Mrs G Jefferies

✉ geffries@wks.net

EXAM BOARD

EDUQAS

ENTRY REQUIREMENTS

Grade 5 in English Literature or Language

choose

food science & nutrition (LEVEL 3)

Good nutrition plays a vital role in our health and wellbeing. Today's media is filled with stories about food and diet as we learn more about their importance in our lives, and the food industry is changing rapidly as society increasingly questions what we eat and where we source it from.

On this course you will study the science of food safety and hygiene, learn about nutrition and understand peoples' different nutritional needs. As well as classroom-based sessions, you will gain the practical skills needed to produce quality food items. Lessons will help you to develop a range of transferrable life skills such as independent

learning, problem-solving, research, development and presenting.

If you have a genuine interest in food and health, then this course is for you. It can lead to a variety of food-based courses at university and is relevant to many careers in a range of industries such as catering, nutrition, sports coaching, leisure, healthcare and science.



SCAN FOR MORE INFO

TEACHING CONTACT

Mrs L Camborne-Paynter

✉ lcamborne-paynter@wkgs.net

EXAM BOARD

EDUQAS

ENTRY REQUIREMENTS

Grade 6 in Food & Nutrition or related GCSE

choose french

French is widely-spoken around the world and there is no substitute for the ability to converse with people in their own language. Careers in business, politics, education, travel, fashion and media are all enhanced by the ability to speak a second language. Increasingly, science, technology and medical courses are recognising and valuing the diversity of skills and aptitude for learning demonstrated by A-level linguists.

You should consider studying a language A-level if you enjoy intellectual challenge, if you want a qualification that will be recognised as academically rigorous by universities and employers, and if you are passionate about the world, travel and communication.



SCAN FOR MORE INFO

TEACHING CONTACT

Mrs R Stenhouse

✉ rstenhouse@wkgs.net

EXAM BOARD

Pearson (Edexcel)

ENTRY REQUIREMENTS

Grade 6 in GCSE French

choose further maths

This course will help you to develop a thorough understanding of further maths and the ability to use it in a variety of contexts. You will be taught to use appropriate technology to deepen mathematical understanding and extend the range of problems you can solve.

The first two papers will examine challenging calculus methods, differential equations, coordinate systems, numerical methods and vectors. The second two papers will provide the opportunity to attempt questions using a variety of techniques taught on topics such as Poisson distribution, hypothesis testing, chi squared tests, algorithms and graph theory, linear programming and critical path analysis.



SCAN FOR MORE INFO

TEACHING CONTACT

Ms G Mason

✉ gmason@wkgs.net

EXAM BOARD

Pearson (Edexcel)

ENTRY REQUIREMENTS

Grade 8 in GCSE Maths

choose geography

Geography is an academically-robust subject which spans the social and physical sciences whilst promoting a lifelong interest and fascination in how the world works. The Russell Group of universities recognise A-level Geography as one of their preferred 'facilitating subjects', which supports an application into a wide range of undergraduate courses.

At WKGS we have an excellent tradition of developing students who either go on to specialise in geography or use it to support future choices. Degrees and careers are many and varied - past students have combined A-level geography with the sciences in order to study medicine, veterinary, dentistry, geophysics,

geochemistry, geology, environmental science or oceanography. Combined with maths, you could also consider meteorology.

In the arts, our A-level geography students have gone on to study economics, town and country planning, landscape architecture, law, product design, fashion, business administration and tourism. Available as an arts or science degree, geography has a reputation for high graduate employment rates (Guardian newspaper). The skills you will gain on this course fit well into many careers, plus our field trip experiences are unforgettable!



SCAN FOR MORE INFO

TEACHING CONTACT

Mr K Vane

✉ kvane@wkgs.net

EXAM BOARD

Pearson (Edexcel)

ENTRY REQUIREMENTS

Grade 6 in GCSE Geography

choose german

Our A-level course provides you with an exciting opportunity to build on your previous study of German - a fascinating, fun subject that can lead to a range of career possibilities.

Through social, intellectual, historical, political and cultural themes you will develop your linguistic knowledge and understanding of the countries and communities where German is spoken. An opportunity to study literature and film will support a deeper analysis of language structures and increase your cultural awareness as part of an integrated approach to learning.

A strong focus is placed on building confidence and fluency in spoken German using relevant

and topical themes. The requirement to research an area of personal interest related to German-speaking countries or communities will enhance your cultural appreciation and enable you to gain a greater awareness of intercultural differences.



TEACHING CONTACT

Mr Mike Thomas

✉ mthomas@wkgs.net

EXAM BOARD

Pearson (Edexcel)

ENTRY REQUIREMENTS

Grade 6 in GCSE German

choose history

"We are not makers of history. We are made by history."

MARTIN LUTHER KING JNR

Understanding past events and people and their significance gives us a better insight into the world around us today. Whilst studying history allows us to learn from the past, it is also an investment in your future, encouraging independence and equipping you with transferable skills. These include being able to communicate complex ideas, the ability to research, analyse and evaluate information, and the capacity to make substantiated judgements. The course offers plenty of enrichment opportunities with a trip to Belfast and Dublin, a possible trip to Russia and

close links to the University of Liverpool.

History is regarded as a 'facilitating subject' by the Russell Group universities, which means that it can lead to a wide range of options for degree study. As a highly flexible qualification, A-level history is an excellent pathway to degrees such as history, law, English and philosophy, and to a range of interesting careers.



SCAN FOR MORE INFO

TEACHING CONTACT

Mrs K Amery

✉ kamery@wkgs.net

EXAM BOARD

AQA

ENTRY REQUIREMENTS

Grade 5 in GCSE History

choose latin

This course has been designed to give you a deep understanding of ancient Roman history, literature and beliefs. It will help you to further improve your Latin translation and comprehension skills, whilst advancing your range of vocabulary.

Not only will you gain a greater understanding of the legacy of the ancient world, you will also acquire knowledge and skills which will help you to become a good problem solver and critical thinker.



SCAN FOR MORE INFO

TEACHING CONTACT

Mrs F Conway

✉ fconway@wkgs.net

EXAM BOARD

OCR

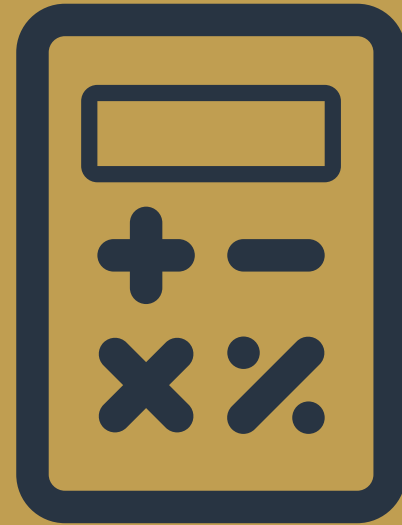
ENTRY REQUIREMENTS

Grade 6 in GCSE Latin

choose maths

Maths provides you with transferable skills that are extremely useful in any career. These include analytical thinking, problem solving, investigating problems and presenting solutions logically, handling and interpreting data and forming and communicating ideas.

Maths is a highly-credible qualification, however the choice of this subject for A-level should also be because you like maths and enjoy the challenge of solving number and logic puzzles. There is a great deal of emphasis on problem-solving, reasoning and modelling.



SCAN FOR MORE INFO

TEACHING CONTACT

Ms G Mason

✉ gmason@wks.net

EXAM BOARD

Pearson (Edexcel)

ENTRY REQUIREMENTS

Grade 7 in GCSE Maths

choose music

Music is regarded by the country's top universities as a rigorous A-level as it helps students to develop a wide range of skills. These include studying the historical context of various styles of music and the inherent traditions of the era, being able to read notation fluently in order to analyse a musical score, using a wide range of technical vocabulary to describe musical features, the self-discipline required to progress with an instrument through independent practice, and manual dexterity.

You should enjoy playing or singing – especially in a group, as this enhances your ensemble skills. You should be prepared to embrace new styles of music, new concepts and be able to appreciate the technicalities of creativity in terms of structure and devices used by composers of all genres.



SCAN FOR MORE INFO

TEACHING CONTACT

Mrs J Williams

✉ jwilliams@wkgs.net

EXAM BOARD

AQA

ENTRY REQUIREMENTS

Grade 6 in GCSE Music or a minimum of Grade 5 instrumental/vocal exam plus Grade 5 theory

choose philosophy, religion & ethics

What is the meaning and purpose of life? How do different religions, cultures and philosophies understand the human predicament? If you enjoy discussion and would like to explore some of the key philosophical, religious and ethical issues of human existence, then this is the subject for you.

You should be interested in the world around you and be able to make links with what you are studying and how it has an impact in the 'real world'. Classes involve plenty of discussion and debate and you will be encouraged to share your own ideas whilst listening to and respecting the

views of others. You will develop critical evaluation and analysis skills which you will put into practice during discussions and in essay-writing.

This course will provide you with excellent transferable skills, including essay writing, debating and the ability to appreciate other viewpoints. Such skills are really useful in a range of university degrees involving critical thinking and discussion e.g. humanities, English and psychology.



SCAN FOR MORE INFO

TEACHING CONTACT

Mrs S Wrightson

✉ swrightson@wkgs.net

EXAM BOARD

EDUQAS

ENTRY REQUIREMENTS

Grade 6 in GCSE Religious Studies (if taken) or in another humanities subject

choose physical education

This course will give you a fantastic insight into the amazing world of sports performance. You will have the chance to perform and coach as you develop a wide-ranging knowledge of the how and why of physical activity and professional sport.

The combination of physical performance and academic challenge provides you with an exciting learning opportunity. Physical education is studied through a range of contexts - you will learn the reasons why we do things, and why some people outperform others, mentally and physically. You will delve into the ethical use of performance enhancing drugs and the influence of modern technology in sport.



SCAN FOR MORE INFO

TEACHING CONTACT

Mrs A Goodall

✉ agoodall@wkgs.net

EXAM BOARD

OCR

ENTRY REQUIREMENTS

Grade 6 in GCSE Physical Education

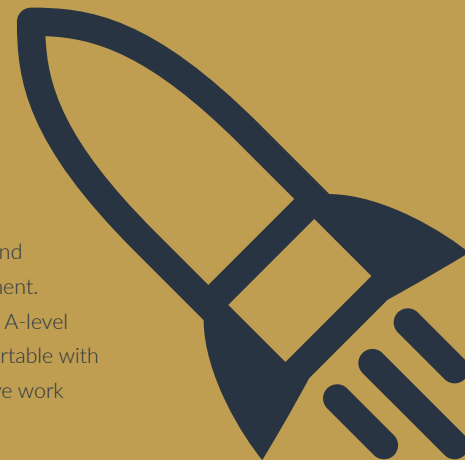
choose physics

This course will suit any student who wishes to develop their interest and enthusiasm in the physics of all that is around them. It will provide a firm scientific foundation for those wanting to make their mark in the world of science and technology in the future. Studying A-level physics does not restrict your options - it expands them.

A-level physics is a mixture of conceptual thinking and very practical applications. You need to be able to think about abstract ideas such as fields, but be able to apply those ideas to how, for instance, electric motors work. You will learn about everything from kinematics to relativity, and recent developments in fascinating areas such as particle physics. Getting accurate results

from experiments requires practice and competence in the use of lab equipment. Calculations are an important part of A-level physics so you will need to be comfortable with algebra. At the same time, descriptive work requires you to communicate clearly.

If you are interested in the limits of space, the beginning of time and everything in between, this is the subject for you. Physics is more than a subject – it trains your brain to think beyond boundaries!



SCAN FOR MORE INFO

TEACHING CONTACT

Dr K Hill

✉ khill@wkgs.net

EXAM BOARD

AQA

ENTRY REQUIREMENTS

Grade 6 in GCSE in Physics or in Combined Science and Maths

choose politics

Ernest Benn described politics as “the art of looking for trouble, finding it whether it exists or not, diagnosing it incorrectly, and applying the wrong remedies.”

In a rapidly changing and increasingly unpredictable world, studying politics has never been more relevant or interesting. This is a great course if you have an enquiring mind and a desire to find out what is going on in the world today and why. The curriculum covers a broad spectrum of political themes, including UK politics and UK Government, political ideas that have shaped our world, and US politics.

The course involves a lot of discussion and



debate, so is ideal for those who enjoy exploring current affairs. You will be expected to stay abreast of the political landscape via the internet, newspapers and TV programmes, and you will need to engage in independent learning to increase your knowledge of politics past and present.

Politics will provide you with many of the skills required for university study. Some politics students go on to work in the political sphere, while other popular career options include law and journalism.



SCAN FOR MORE INFO

TEACHING CONTACT

Mrs K Amery

✉ kamery@wkgs.net

EXAM BOARD

Pearson (Edexcel)

ENTRY REQUIREMENTS

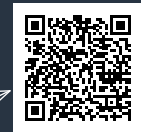
Grade 6 in any Humanities subject at GCSE

choose product design

If you have an interest in design and manufacturing, enjoy designing and making products and like learning about new and emerging technologies, then this is the course for you. You should enjoy working independently or as part of a team to develop design ideas, and have an enquiring mind to help you experiment and manipulate materials in the workshop or CAD/CAM suite. This course includes external visits to local manufacturing businesses, university enrichment opportunities and a design tour.

Product design helps students take a broad view of design and technology, develop their capacity to design and make products and appreciate the complex relations between design, materials,

manufacture and marketing. This creative and thought-provoking qualification will equip you with the practical skills, theoretical knowledge and confidence to succeed in a number of careers, especially those in the creative and STEM industries. You will gain a real insight into what it means to be a designer, together with knowledge and skills sought by universities and employers.



SCAN FOR MORE INFO

TEACHING CONTACT

Mr J Ford

✉ jford@wkgc.net

EXAM BOARD

AQA

ENTRY REQUIREMENTS

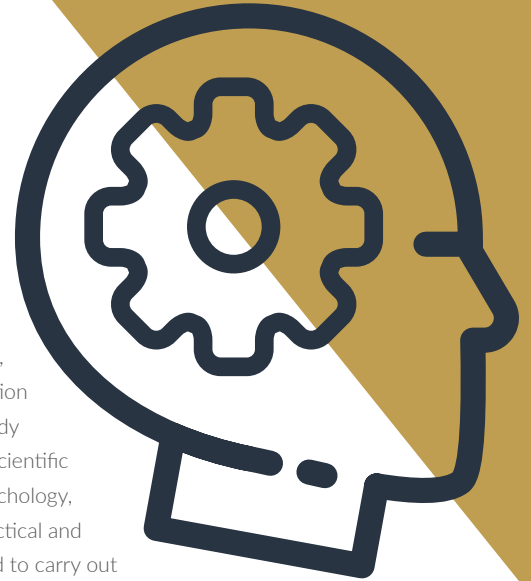
Grade 6 in GCSE Design and Technology is desirable, however it is not essential that you have studied Technology at GCSE level. Alternatively, you should have studied subjects such as physics, chemistry, art and maths and must have a real desire and enthusiasm to study the subject.

choose psychology

You are human and yet, chances are, you have learnt very little about the workings of the human mind, the organ that governs your every perception and sensation. Psychology focuses on the science of the mind, behaviour and experience. It looks at how individuals think, how they behave and how they are affected by their biological make-up and wider social groups.

This scientific subject builds on skills developed in traditional sciences and humanities and enables progression into a wide range of other subjects. Besides learning the fundamentals of psychology, you will develop skills valued by universities and employers, including critical analysis, independent thinking and research.

The course covers a number of core approaches to psychology which underpin knowledge, understanding and application of the subject. You will study issues and debates in the scientific study of contemporary psychology, and master the ethical, practical and mathematical skills required to carry out research activities.



SCAN FOR MORE INFO

TEACHING CONTACT

Mrs L Hughes

✉ hughes@wkgs.net

EXAM BOARD

AQA

ENTRY REQUIREMENTS

Grade 5 in GCSE Sciences, Maths and English

choose spanish

This course allows you to build on the grammatical and linguistic knowledge gained at GCSE, developing your understanding of the diverse culture and language of the Spanish-speaking world.

Choosing A-level Spanish is a smart move if you want a fascinating subject that offers a range of career possibilities and a lot of fun along the way. It is now possible to do almost any degree with a language combination, and Spanish is a 'facilitating' subject which keeps your future options wide open.

Studying Spanish at West Kirby Grammar School offers you a flexible timetable and smaller classes which means that all teaching is tailored to meet your needs. Our two highly-experienced, specialist teachers work in partnership with you, supporting your learning every step of the way.



SCAN FOR MORE INFO

TEACHING CONTACT

Mrs S Jennings

✉ sjennings@wkgs.net

EXAM BOARD

AQA

ENTRY REQUIREMENTS

Grade 6 in GCSE Spanish

choose textiles

This course provides a greater emphasis on fashion and is more relevant to design courses at leading universities and careers in the fashion and textile industries. A strong academic element covers materials and industrial applications, helping to prepare you for many courses such as marketing, product development and textiles engineering.

Textiles is a creative and thought-provoking qualification which will equip you with both practical skills and theoretical knowledge, whilst increasing confidence in your abilities. A GCSE in textiles is the best foundation for A-level study (along with a genuine interest, creative ability and good manufacturing skills), however we will also consider applications from interested students who have not studied textiles previously.



SCAN FOR MORE INFO

TEACHING CONTACT

Mrs J Plowman

✉ jplowman@wkgs.net

EXAM BOARD

AQA

ENTRY REQUIREMENTS

Grade 6 in GCSE Textiles and /or keen interest in Textiles and strong manufacturing skills

choose theatre studies

Theatre studies is an exciting, varied and challenging course. The skills that you will develop will be with you for life – whatever area you choose to pursue. You will explore ideas on performance, design, history, literature, politics and art, and consider how theatre can be used in society to challenge our ideas.

If you enjoy performing or designing – then this is the course for you. If you like thinking for yourself, taking risks and experimenting – then this is the course for you. You will have opportunities to see live theatre, take part in residential visits, participate in workshops with professionals from theatre, and work with staff who are passionate and knowledgeable about their subject.

You should choose theatre studies if you have an interest in theatre, performance, literature, creative thinking, human behaviour – LIFE!



SCAN FOR MORE INFO

TEACHING CONTACT

Ms J Halliday

✉ jhalliday@wks.net

EXAM BOARD

AQA

ENTRY REQUIREMENTS

GCSE Drama Level 5 is preferred, however a genuine interest in theatre is more important than your experience

Wider Learning Opportunities

As well as your chosen subjects, you'll be encouraged to complete an Extended Project Qualification and also take part in a range of enrichment activities.

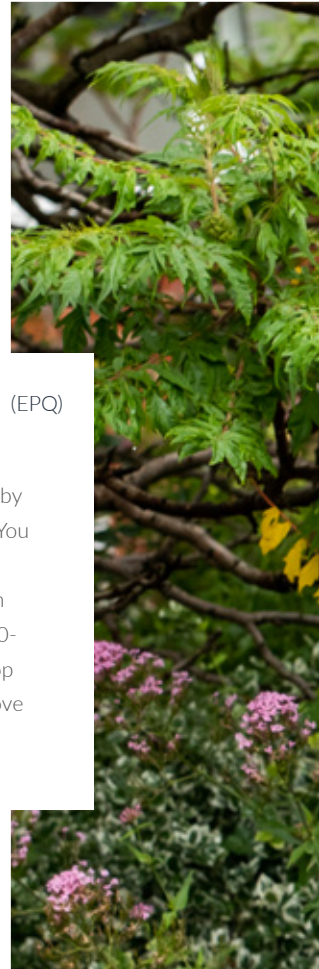
Enrichment

The academic curriculum is suspended for one afternoon each week to allow students to take part in our enrichment programme. We believe that these enrichment activities are a vital part of your development, equipping you with skills and experience which will support university applications and prove beneficial throughout life.

You will have a wide range of activities to choose from, including volunteering in the local community and overseas, taking part in the Young Entrepreneurs' Challenge, developing your understanding of driving with a pre-driving course, learning self-defence or helping out with the production of the popular Year 13 Yearbook.

Extended Project Qualification (EPQ)

An EPQ is an opportunity to extend your abilities beyond your chosen A-level subjects by embarking on a largely self-directed project. You will choose a topic which interests you, plan, research and develop your idea and decide on your finished product (which is usually a 5,000-word essay). The EPQ will help you to develop research and presentation skills which will prove invaluable at university and beyond.








West Kirby

Grammar School

choose

to be you

 0151 632 3449

 office@wks.net

 www.wks.org