

Iceland 2026

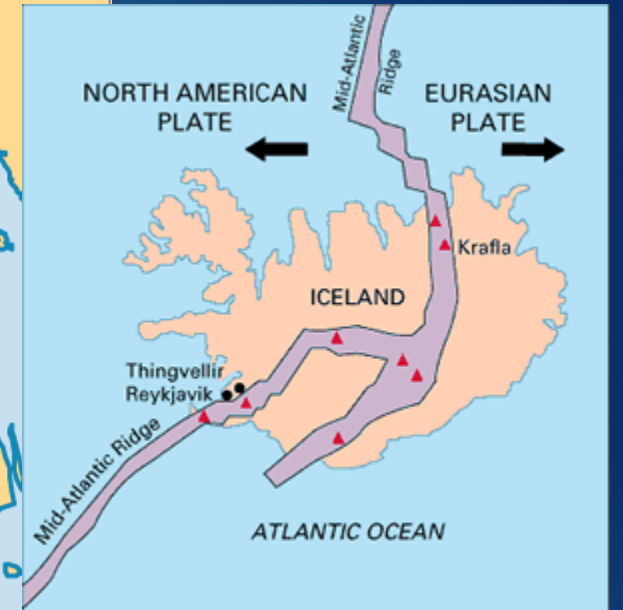
THURS 26.03.2026 MANCHESTER-REYKJAVIK 13:05-14:50

WED 01.04.2026 REYKJAVIK-MANCHESTER 08:00-11:40

<https://youtu.be/tTlsX0537Is>

https://youtu.be/bYVebL_BYqo

Geography Fieldtrip to Iceland





Why Iceland for Geography?

Outstanding Physical Geography:
coastal erosion,
glacial erosion / deposition,
climatic / atmospheric features,
tectonic features: geysers, volcanic features.

Plenty of human issues too:
rural depopulation, sustainable energy,
farming, city comparison.

GEOGRAPHY

Iceland is a sparsely-populated North Atlantic island, famous for its hot springs, geysers and active volcanoes. Lava fields cover much of the land and hot water is pumped from under the ground to supply much of the country's heating.

103,000 km² in size, it is situated to the west of Norway and to the east of Greenland. It is 2 hours flying time from Manchester.

Geologically speaking, it is the youngest country in the world.

So a Geography Fieldtrip that is fully accessible to non GCSE Geographers wanting to know about this fantastic place.



Iceland 2022

West Kirby Grammar School

Name: _____

Form: _____



Notice the unpaved road, the open brook, the foot bridge, Mount Esja?

The photograph below shows Lakjargata today (taken just across from the brook seen in Photo 6).

Add arrows to those buildings that you can recognise as being in both these photos.

Annotate the image with any differences you can see from then and now.



Photo 7

Stop 4: Austurvöllur Square

Walk along Vonarstraeti for a short distance. This will take you back in the direction you've just come from.

Turn off to the right into **Templarsund** and continue until you reach **Austurvöllur Square**. During the time of the first settlement this square was used as a grazing place and hay fields and it's thought that Ingólfur Arnarson's farm was close by.

Letter	Building
	Hotel Borg (1930)
	Old Pharmacy building (1917)
	The Parliament building (1881)
	The Dómkirkjan (1796)



Figure 12

14

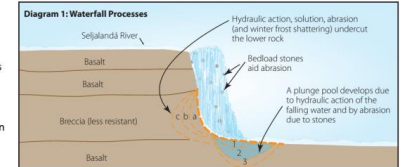
Study guide

(4) ICELAND'S "YOUTHFUL" RIVERS: RIVER FEATURES: WATERFALLS

READ: Iceland has hundreds of waterfalls, from tiny to gigantic. This is partly due to the high rainfall (!) but also particularly due to the many cliffs that consist of layers of interbedded hard and soft rocks.

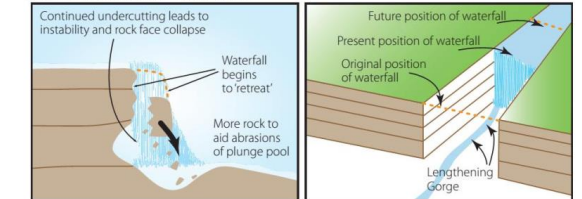
Two waterfalls that you will most likely be visiting are Seljalandsfoss and Skógafoss; both are splendid.

This diagram shows a sideways look at Seljalandsfoss waterfall. The annotations on help to explain the processes at work in a waterfall.



ROCK TERM DEFINED: Breccia is a band of rock that is made up of originally broken pieces of rock that were possibly laid down by a glacier or a river and became fused together as other layers of rock built up on top of them, in this case basalt lava. Screens often turn into Breccias because they are piles of broken rock that was weathered 'in situ' (where it is) on a cliff face and then fell off (mass movement) building up a fan shape 'pile' of rocks beneath. In time these can become slightly compressed into a solid rock layer. Breccia's are not very resistant because of them being a collection of different rocks.

These diagrams illustrate how continued undercutting of the rock at the base of the waterfall can eventually lead to rock collapse and to gorge formation. In this way, as the relentless processes of running and falling water continue, the waterfall moves back upstream (headwards) and the gorge lengthens. You should spot many such gorges as you travel around Iceland.



Gullfoss: Hvita

Seljalandsfoss

Skogafos



Away from the crowds at Seljalandsfoss, Gullfoss has carved a secret chamber hidden by cliffs.

41

Travel –



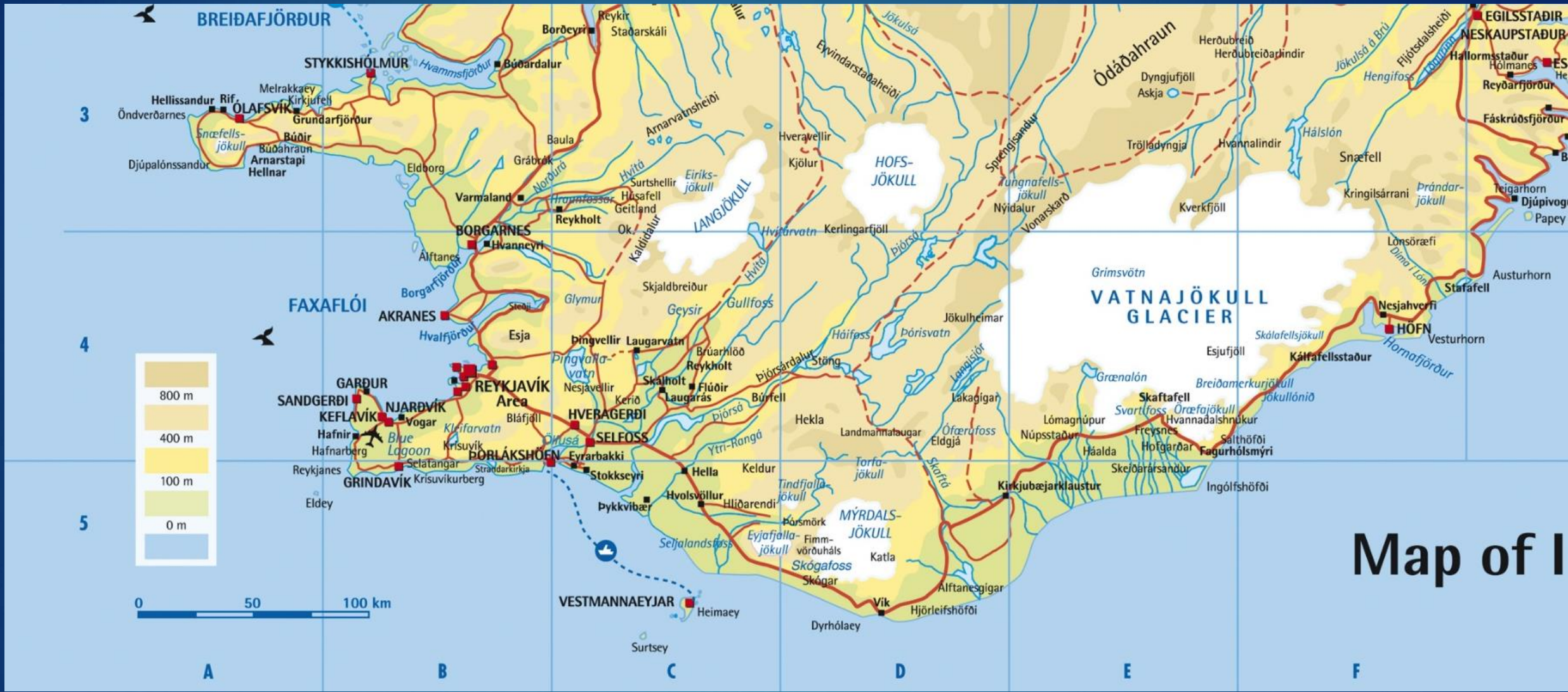


Map of Iceland

Index to Tourist Attractions

Ásbyrgi	E2	Gullfoss	C4	Jökulsá-canyon	E2	Mt. Dyrfjöll	G2	Reykhlóar	B2	Þingvellir	C4
Blue Lagoon	B4	Hellnar	A3	Jökulsárlón	E4	Mt. Snæfell	F3	Reynisdrangar	D5	Þórsmyrk	D5
Dettifoss	E2	Hljóðaklettur	E2	Kirkjubæjarklaustur	E5	Mt. Kirkjufell	A3	Skaftafell	E4		
Dyrhólaey	D5	Krisuvík	D2	Hólur	B4	Mt. Herðubreið	F3	Skálholt	C4		
Geysir	C4	Hornstrandir	B1	Krisuvíkurborg	B5	Mývatn	E2	Skógafoss	D5		
Goðafoss	E2	Hvítserkur	C2	Látrabjarg	A2	Námaskarð	E2	Vestmannaeyjar	C5		

■	Town	■	Village	⚓	Ferries	🐋	Whale watching
	Ring Road		Other Road		Mountain Track		



Map of I

Day 1. Reykjavík

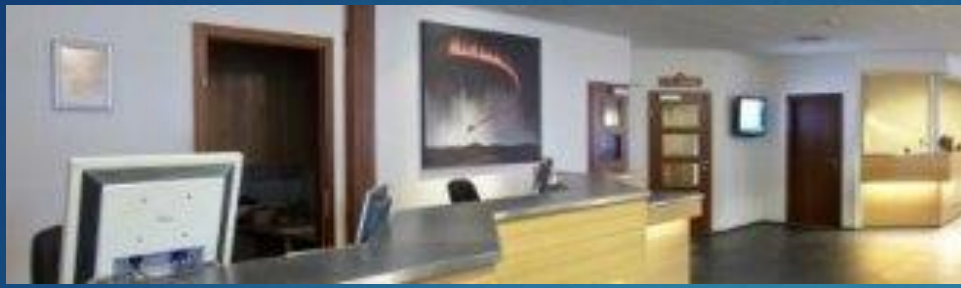
- Explore the world's most northern capital city.
- Home to 65% of the country's population.
- Great opportunity for shopping and sightseeing.



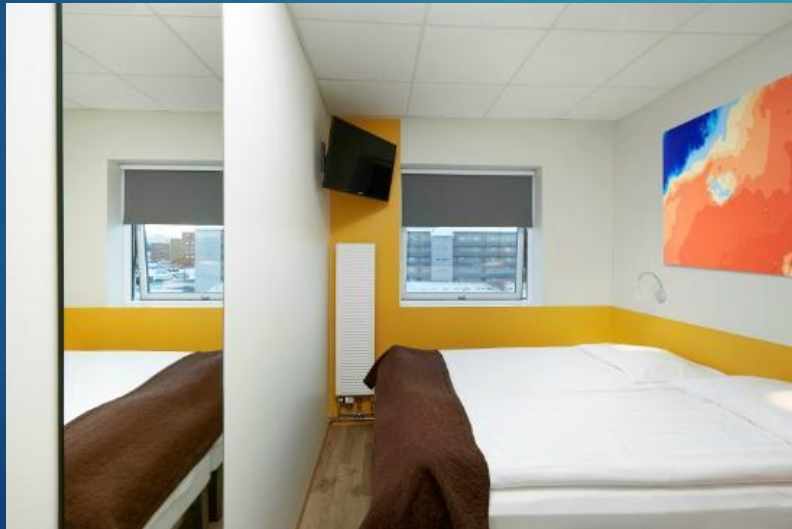
Day 1 – City walking tour.



<http://outlook.office.com>



HOTEL



C A B I N

Hotel Cabin

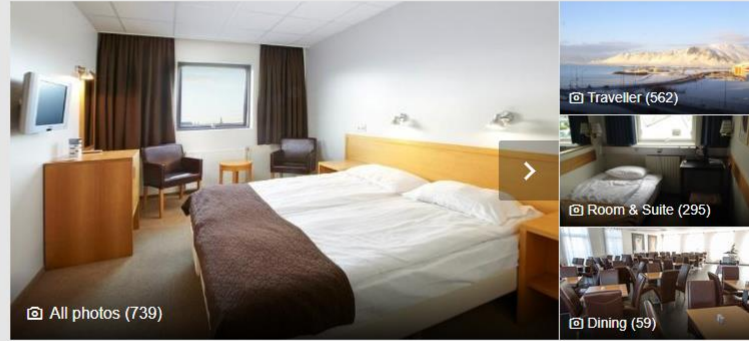
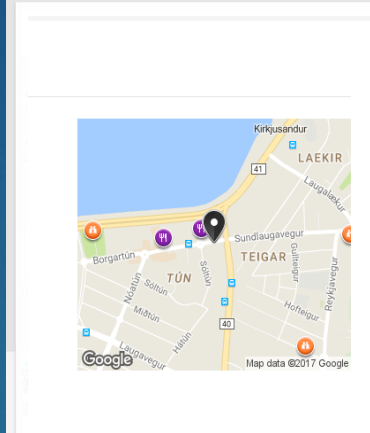


Hotel Cabin

2,118 Reviews | #47 of 54 Hotels in Reykjavik

Borgartun 32, Reykjavik 105, Iceland

Save

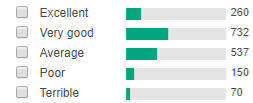


- Overview
- Rooms
- Reviews
- About
- Photos
- Nearby
- Q&A
- Room Tips

Reviews (2,118)

Write a Review

Traveller rating



Traveller type

- Families
- Couples
- Solo
- Business
- Friends

Time of year

- Mar-May
- Jun-Aug
- Sep-Nov
- Dec-Feb

Language

- All languages
- English (1,749)
- German (94)
- French (76)
- More languages

Show reviews that mention

Search reviews

- All reviews
- budget hotel
- deluxe room
- bread
- salad buffet
- petrol station
- city centre
- ham
- minute walk
- rooms are small
- evening buffet
- northern lights
- the bus
- hard boiled eggs
- yogurt
- blue lagoon
- cold meats
- porridge

1 - 5 of 1,749 reviews



428rachaelh
Sheffield,
United
Kingdom

5



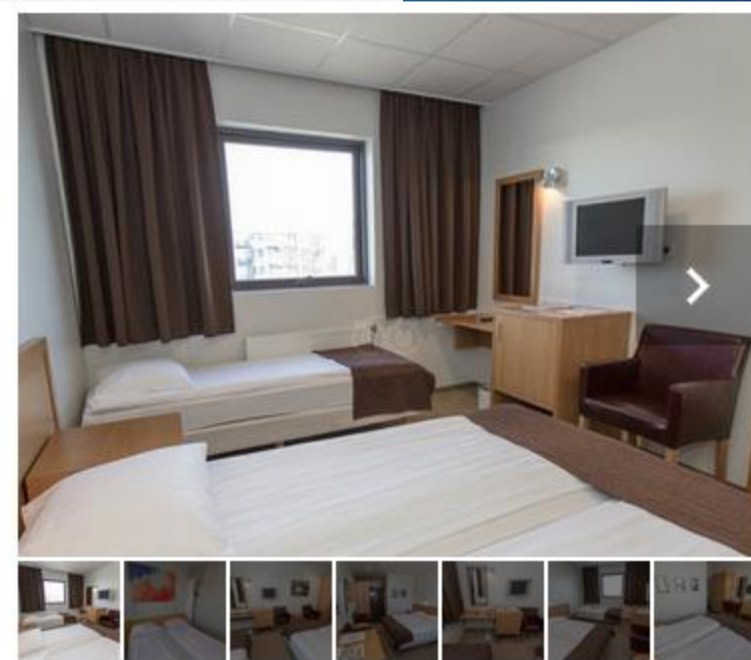
Reviewed 4 days ago via mobile

Excellent hotel!

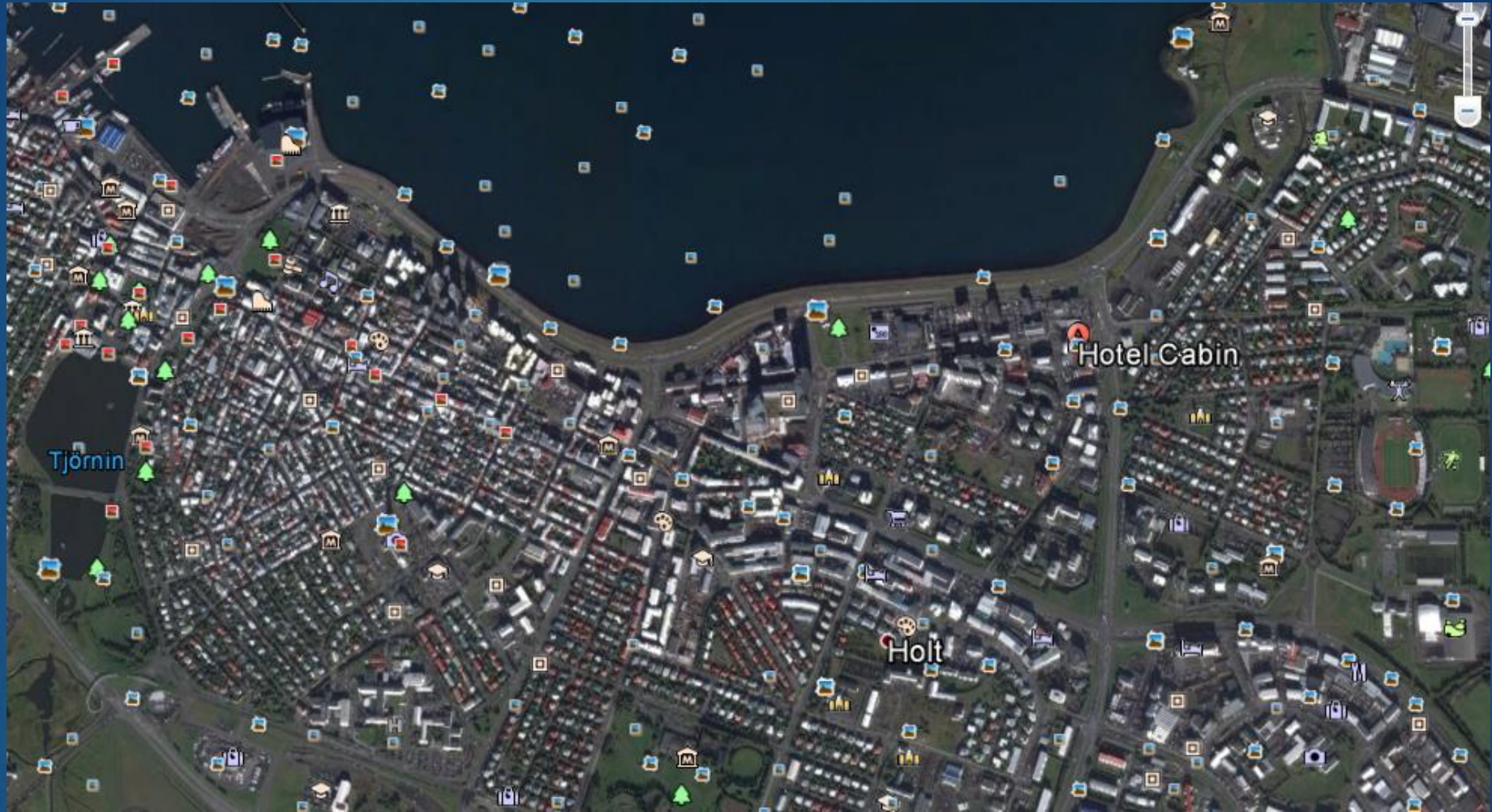
A lovely hotel with very friendly efficient staff. The rooms were basic and small but very clean and warm. The beds were extremely comfortable too. Staff were very helpful. Good location, approx 25 minutes walk to the centre of Reykjavik. The food at breakfast and... More

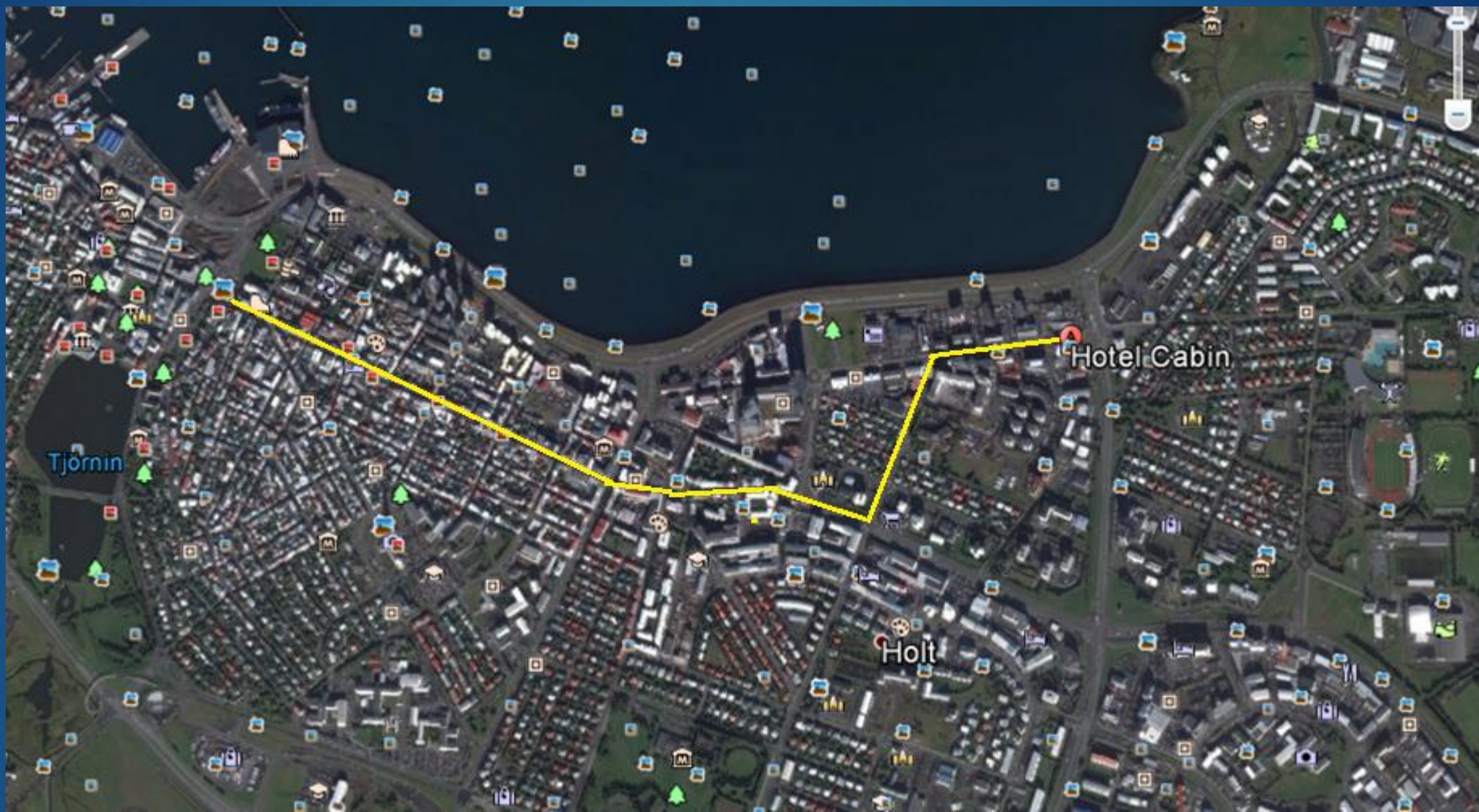
1 Thank 428rachaelh

Response from Ída S. sales and marketing representative at Hotel Cabin



https://www.tripadvisor.co.uk/Hotel_Review-g189970-d234325-Reviews-Hotel_Cabin-Reykjavik_Capital_Region.html







The first pool we visit – in the centre of the capital – a 10-minute walk from the hotel.

A place where Icelanders go to relax each evening. Here you must shower properly pre swim as the Icelanders are fanatical about cleanliness.

Unless it is icy cold, the water slides are usually open when we visit.

Day 2. The Golden Circle



Thingvellir National Park

A wide-angle photograph of a river flowing through a rift valley in Thingvellir National Park, Iceland. The river is clear, revealing the hexagonal basalt columns on the riverbed. The surrounding landscape is rugged, with moss-covered rock formations and sparse vegetation. The sky is overcast, and the overall scene is serene and natural.

- UNESCO World Heritage Site.
- At the boundary of the North American and Eurasian tectonic plates.
- Perfect place to give meaning to plate tectonics.



- Main attraction is the spectacular Strokkur Geysir which erupts every 8-10 minutes.
- Home to various other hot springs, bubbling mud pools and lively eruptions.
- Also home to the Great Geysir, after which all other geysers in the world are named.

Geysir Geothermal Area



Gulfoss Waterfall

- One of Iceland's most iconic two-tiered waterfalls.
- Powerful waterfall plummeting 32 metres down into its rugged gorge, with walls reaching up to 70 metres high.
- Witness a shimmering rainbow curving over the falls when the sun is shining.





VATNAJÖKULL
8300 km²/3203 sq.mi.
Grimsvötn

ICELAND'S LONGEST RIVER
230 KM

THE HIGHEST WATERFALL
IN ICELAND 198 M / 594 FT

1550 THE LAST
CATHOLIC BISHOP
OF HOLLAR JON
ARASON & HIS TWO
SONS EXECUTED

IN 1783 A.D. THE GREATEST VOLCANIC LAVA
ERUPTION IN HUMAN HISTORY STARTED
IN LAKAGIGAR, IT COVERS 565 SQUARE
KM OR 221 SQUARE MILES

NATIONAL PARK

MT HEKLA IS ICELAND'S MOST ACTIVE
VOLCANO ERUPTING EVERY 10 YEARS.
WAS BELIEVED TO BE THE GATE
TO HELL IN OLDEN TIMES.

LAUGAVEGURINN - ONE OF THE MOST
POPULAR HIKING TRAILS IN ICELANDIC
WILDERNESS. 55 KM / 23 - 25 HOURS

FIMMVÖRÐUHÁLS - SKÓGAR-
ÞÓRSMÖRK - BEAUTIFUL AND
POPULAR TRAIL. 20 KM / 7-9 HOURS

**MÝRDALS-
JÖKULL**
596 km²/230 sq.mi.

1627 ALGERIAN PIRATES ATTACK
THE ISLAND KILLING 40 &
CAPTURING ABOUT 250 PEOPLE
TO BE SOLD IN SLAVERY

VOLCANIC ERUPTION IN 1973
SUBMERGED HALF THE TOWN IN LAVA

SPECTACULAR SCENERY ALL ALONG
THIS COSTLINE, THE CROWN JEWEL
BEING SKÓGAR WATERFALL

THIS ISLAND WAS FORMED
IN AN ERUPTION IN 1963

EXTRAORDINARY ROCKFORMATIONS,
SCENERY & BIRDLIFE

1343 FIRST HERETIC BURNING IN ICELAND
- KATRÍN THE NUN BURNT ALIVE FOR
SELLING HER SOUL TO THE DEVIL

REYKJAVÍK
SELTJARNARNES

MAGNIFICENT
SCENERY
& BIRDLIFE

VESTMANNAEYJAR

MÝRDALS-
JÖKULL

SKÓGAR

SKÓGAR

SKÓGAR

SKÓGAR

SKÓGAR

SKÓGAR

SKÓGAR

SKÓGAR

SKÓGAR

SKÓGAR

SKÓGAR

SKÓGAR

SKÓGAR

SKÓGAR

SKÓGAR

SKÓGAR

SKÓGAR

SKÓGAR

SKÓGAR

SKÓGAR

SKÓGAR

SKÓGAR

SKÓGAR

SKÓGAR

SKÓGAR

SKÓGAR

SKÓGAR

SKÓGAR

SKÓGAR

SKÓGAR

SKÓGAR

SKÓGAR

SKÓGAR

SKÓGAR

SKÓGAR

SKÓGAR

SKÓGAR

SKÓGAR

SKÓGAR

SKÓGAR

SKÓGAR

SKÓGAR

SKÓGAR

SKÓGAR

SKÓGAR

SKÓGAR

SKÓGAR

SKÓGAR

SKÓGAR

SKÓGAR

SKÓGAR

SKÓGAR

SKÓGAR

SKÓGAR

SKÓGAR

SKÓGAR

SKÓGAR

SKÓGAR

SKÓGAR

SKÓGAR

SKÓGAR

SKÓGAR

SKÓGAR

SKÓGAR

SKÓGAR

SKÓGAR

SKÓGAR

SKÓGAR

SKÓGAR

SKÓGAR

SKÓGAR

SKÓGAR

SKÓGAR

SKÓGAR

SKÓGAR

SKÓGAR

SKÓGAR

SKÓGAR

SKÓGAR

SKÓGAR

SKÓGAR

SKÓGAR

SKÓGAR

SKÓGAR

SKÓGAR

SKÓGAR

SKÓGAR

SKÓGAR

SKÓGAR

SKÓGAR

SKÓGAR

SKÓGAR

SKÓGAR

SKÓGAR

SKÓGAR

SKÓGAR

SKÓGAR

SKÓGAR

SKÓGAR

SKÓGAR

SKÓGAR

SKÓGAR

SKÓGAR

SKÓGAR

SKÓGAR

SKÓGAR

SKÓGAR

SKÓGAR

SKÓGAR

SKÓGAR

SKÓGAR

SKÓGAR

SKÓGAR

SKÓGAR

SKÓGAR

SKÓGAR

SKÓGAR

SKÓGAR

SKÓGAR

SKÓGAR

SKÓGAR

SKÓGAR

SKÓGAR

SKÓGAR

SKÓGAR

SKÓGAR

SKÓGAR

SKÓGAR

SKÓGAR

SKÓGAR

SKÓGAR

SKÓGAR

SKÓGAR

SKÓGAR

SKÓGAR

SKÓGAR

SKÓGAR

SKÓGAR

SKÓGAR

SKÓGAR

SKÓGAR

SKÓGAR

SKÓGAR

SKÓGAR

SKÓGAR

SKÓGAR

SKÓGAR

SKÓGAR

SKÓGAR

SKÓGAR

SKÓGAR

SKÓGAR

SKÓGAR

SKÓGAR

SKÓGAR

SKÓGAR

SKÓGAR

SKÓGAR

SKÓGAR

SKÓGAR

SKÓGAR

SKÓGAR

SKÓGAR

SKÓGAR

SKÓGAR

SKÓGAR

SKÓGAR

SKÓGAR

SKÓGAR

SKÓGAR

SKÓGAR

SKÓGAR

SKÓGAR

SKÓGAR

SKÓGAR

SKÓGAR

SKÓGAR

SKÓGAR

SKÓGAR

SKÓGAR

SKÓGAR

SKÓGAR

SKÓGAR

SKÓGAR

SKÓGAR

SKÓGAR

SKÓGAR

SKÓGAR

SKÓGAR

SKÓGAR

SKÓGAR

SKÓGAR

SKÓGAR

SKÓGAR

SKÓGAR

SKÓGAR

SKÓGAR

SKÓGAR

SKÓGAR

SKÓGAR

SKÓGAR

SKÓGAR

SKÓGAR

SKÓGAR

SKÓGAR

SKÓGAR

SKÓGAR

SKÓGAR

SKÓGAR

SKÓGAR

SKÓGAR

SKÓGAR

SKÓGAR

SKÓGAR

SKÓGAR

SKÓGAR

SKÓGAR

SKÓGAR

SKÓGAR

SKÓGAR

SKÓGAR

SKÓGAR

SKÓGAR

SKÓGAR

SKÓGAR

SKÓGAR

SKÓGAR

SKÓGAR

SKÓGAR

SKÓGAR

SKÓGAR

SKÓGAR

SKÓGAR

SKÓGAR

Hotel Dyrholaey, Vik.

<https://youtu.be/BwwpnKA45H4>

<https://youtu.be/sOXJ1h6VtV8>



Hotel Dyrholaey, Vik.



Day 3. Guided Skafitafell & Jokulsarlon Tour



Vatnajökull







Day 4. Dyrholaey & Vik on the South Shore



Reynishverfi beach

- Locate near Vik
- Created by the cooling of lava, these pipe-like basalt columns are one of Iceland's fascinating natural wonders.

The Lava Centre



Day 5 Solhemajokull glacier, part of the larger Myrdalsjokull ice sheet



Seljalandsfoss Waterfall



- Falling 40m over old basalt sea cliffs this is one of Iceland's most impressive waterfalls.
- Walk behind the waterfall for a unique perspective.
- With the site's increasing popularity, gain understanding of impacts of increasing tourism in Iceland.

Skógafoss Waterfall

A wide waterfall cascading down a rocky cliff face, with people standing at the base on a dark, pebbly shore. The water is white and frothy as it falls, creating a misty spray at the bottom. The surrounding rocks are dark and covered in patches of green moss. The sky is a clear, bright blue.

- One of the biggest and most beautiful waterfalls in Iceland, with a wide curtain of water cascading from a height of 62m.
- Get close to the base of this waterfall through a short gorge.
- Illustrates how waterfalls erode with time.



Eyjafjallajökull





- The Bridge Between the Continents illustrates the widening fissures of this stretched land.
- Stand with one foot on the Eurasian Plate and the other on the North American Plate.
- A unique way to give meaning to plate tectonics.

Day 6. Bridge Between the Continents – Reykjanes Peninsula Tour



Hellisheidi Geothermal Power plant





Day 6 Blue lagoon at night



Includes a drink (soft of course), a great experience, at the pool bar.

The face cream from the waters is free (secret of my young looking skin ☺)

<https://www.bluelagoon.com/day-visit/the-blue-lagoon>

Day 7. Departure



Health & Safety – weather.

Iceland in March / April Move from the long dark days to rainy days with a fair amount of wind. 13 – 16 hours of darkness down from 20 hours.

A dusting of snow to blizzard conditions is quite possible, as is ice at night.

What is likely on one day will be heavy rain and strong winds

Low temperatures at night: -2°C to 2.5°C excludes wind chill.

High daytime temperatures: 3°C to 7°C excludes wind chill

But climate change may mess this up.

Northern lights at night (cloud depending)

4 seasons in one day



Health and safety – UK Government FCO – Terrorism

- ▶ There is a high threat of terrorist attack **globally** affecting UK interests and British nationals, including from groups and individuals who view the UK and British nationals as targets. Stay aware of your surroundings at all times.
- ▶ What to do in the event of a terrorist attack. WKGS risk assessment for the trip.
- ▶ **Terrorism in Iceland** Although there's no recent history of terrorism in Iceland, attacks cannot be ruled out.

Crime

Crime levels are low but petty theft and antisocial behaviour can occur, particularly around bars in downtown Reykjavík. Take sensible precautions and keep your belongings safe.

- ▶ Mobile phones – get them insured. Look after your phone. Same for buds.
- ▶ Money belts are good.
- ▶ Do not encourage the 'local wildlife' especially from the swimming pool.

Laws and cultural differences

- ▶ **Personal ID** You do not have to carry your passport with you, but it is sensible to have some form of ID. Please carry a copy of your passport's photo page as ID. Your teachers will look after your passport.
- ▶ **E-cigarette bans** It is illegal to smoke or use e-cigarettes in restaurants, bars, public transport and public buildings, and you could get a fine.

Foreign travel advice

UK GHIC & UK EHIC

- ▶ For most people visiting abroad, the UK Global Health Insurance Card (UK GHIC) replaces the existing European Health Insurance Card (EHIC) for new applications.
- ▶ **HOWEVER:**
- ▶ UK-issued European Health Insurance Card (EHIC) or a Global Health Insurance Card (GHIC) to get medical treatment in Iceland are valid now. Have the passport copy with you at all times. Please organise obtaining one of the cards.

Get healthcare cover abroad with a UK GHIC or UK EHIC

The UK Global Health Insurance Card (GHIC) lets you get necessary state healthcare in the European Economic Area (EEA), and some other countries, on the same basis as a resident of that country. This may be free or it may require a payment equivalent to that which a local resident would pay.

The UK GHIC has replaced the existing European Health Insurance Card (EHIC). If you have an existing EHIC you can continue to use it until the expiry date on the card. Once it expires, you'll need to apply for a UK GHIC to replace it.

You can apply for a new card up to 9 months before your current card expires.

A UK GHIC is free and lasts for up to 5 years. Apply for your new card through the NHS website. Avoid unofficial websites – they may charge

Healthcare abroad

Get healthcare cover abroad with a UK GHIC or UK EHIC

[Going abroad for treatment](#)

[Moving abroad](#)

Passport

- ▶ **Your passport must be:**
 - **issued less than 10 years before the date you enter the country (check the 'date of issue')**
 - **valid for at least 3 months after the day you plan to leave (check the 'expiry date')**
 - **No Passport yet? – this is now urgent before Christmas**
 - **Not on a UK passport? You are responsible for checking and following the visa requirements for Iceland. See Mr Vane ASAP.**

6. Expectations - Parental agreement.

- Delivering my daughter/son at times to be specified
- Ensuring that a valid passport has been obtained
- Extra insurance cover for expensive things like cameras / iPads /mobile phones/ jewellery if required;
- Ensuring that the details entered onto the online medical form are correct and accurate
- Ensuring that my daughter has an appropriate amount of funds
- Repaying any costs incurred in the event of my daughter/son being sent home due to a breach of the agreed rules, or because my daughter/son/ward has not eaten anything.

Costs include other reasons such as:

- lost passport by my daughter/son/ward (including all travel costs to obtain replacement documents – not just the cost of the replacement passport)
- any medical bills
- any costs for using a teacher's mobile phone, or costs incurred by a teacher.
- any costs incurred as a result of a teacher loaning extra money.

Expectations - Student agreement.

I understand that as a participant I am responsible for:

Registering in my allotted group at the times specified throughout the expedition.

Looking out for other participants using the buddy system, trying my best to get on with people.

Being sensitive to the differences in the cultures I will encounter, treating people always with respect as an ambassador for WKGS.

Abiding by the following 7 simple rules:

7 RULES I AGREE TO ABIDE BY:

1. I will not invite persons who are not in the expedition party into my room without the permission of a member of staff.
2. I understand that if I do not eat anything substantial that I may be sent home.
3. I will not go out alone and/or go out without permission (this includes staying out beyond agreed times).
4. Not consuming alcohol and also not smoking (including e-cig / vapes)
5. Observe the instructions given to me and act on them. And follow meeting times
6. Do not purchase knives, lasers and other weaponry such as martial arts equipment (even as gifts).
7. Any type of cyber-bullying of a participant on the trip by myself, or my friends back home, is strictly forbidden.

Clothing and the kit list

Iceland in late March / April moves from the long dark days to rainy days with a fair amount of wind. 13 – 16 hours of darkness down from 20 hours.

A dusting of snow or full on blizzard is quite possible as is ice at night.

What is likely on one day will be heavy rain and strong winds.

Four seasons in one day are quite possible.

Low temperatures at night: - 2°C to 3°C

High daytime temperatures: 4°C to 7°C

But climate change may mess this up.

Maybe a chance to see the northern lights at night (cloud depending)

Prepare for the worse – remember your folks are not there to remind you.

What to wear

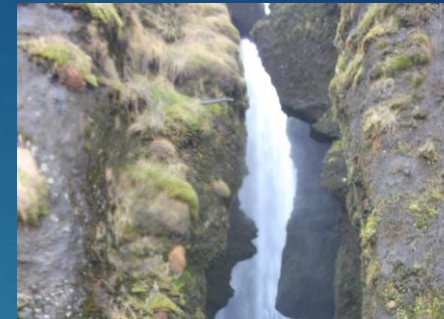
Waterproofs. Check it in the shower NOW

Waterproof pants and jacket. Suggest a spare jacket if you can fit it in just in case of heavy rain

Every day - outdoor activities so you will need:

- ▶ Layers.
- ▶ Thermal **long**-underwear (vest and long pants),
- ▶ Thermal leggings x2 or 3
- ▶ Normal trousers(Hiking) covered by waterproof pants
- ▶ A layer of fleece on top. You will have your hoodie.
- ▶ Good socks – not nylon – consider silk liners. Carry spare dry pair in ruck sack
- ▶ Walking boots – if wearing mum's check them out by wearing them for a while.

- ▶ Do not buy '*Superdry*' – it isn't !



What to wear

- ▶ Packing for a trip to Iceland in the winter seasons requires **lots of layers**.
- ▶ **thermal long-underwear** (a shirt and pants), a layer of fleece on top, and then **waterproof pants and jacket**.
- ▶ A scarf, hat gloves, and several wool (tight woven) sweaters are also necessary, as are sturdy, waterproof boots.
- ▶ Hoodies – why?
- ▶ <https://youtu.be/cT-tivDQBB4>



What to wear

- ▶ Iceland is close to the Arctic Circle so it is going to be cold and even freezing as Iceland comes out of winter.
- ▶ Expect cold temperatures - so pack layers with waterproof outer layers, and strong waterproof boots, a thick jacket, gloves, hat, scarf and warm waterproof boots.
- ▶ DON'T WEAR JEANS ON THE DAYS OUT –save them for the evening. Better still do without them altogether because they will get wet in snow and rain.
- ▶ Black leggings over thermals is fine. THERMAL LEGGINGS but what if it rains – cheap waterproof trousers are the answer.
- ▶ Remember to pack your swimsuit/ bikini as swimming is a popular activity all year round and most towns and villages have pools filled with water from natural hot springs. Very warm once you are in.
- ▶ **To sum it up - Wrap up warm, comfort is key, you can take layers off.**

What to wear

Hat that covers ears

Hood on coat

Snood (Sports Direct)

Waterproof coat ideally lined

Lots of layers. Thermals at base then T shirt then fleece

2 pairs of waterproof gloves

Thermals / cotton trousers / thermal leggings / waterproof trousers

Walking socks & silk liners

Walking boots

gaiters

Crampons

Rucksack – waterproof or with a plastic bag inside.
You Might like to buy a waterproof cover (Sports Direct)



amazon.co.uk Delivering to Liverpool L9 Update location All crampons

Account & Lists Returns & Orders Basket

The Christmas Shop

Amazon.co.uk Today's Deals Resale Outlet Subscribe & Save Vouchers Amazon Prime Prime Video Prime Student Mobile Apps Amazon Pickup Locations

1-48 of over 9,000 results for "crampons" Sort by: Featured

Eligible for free delivery
 Free UK Delivery by Amazon
 Get FREE delivery on eligible orders dispatched by Amazon

Customer Reviews
 ★★★★★ & Up

Any Price
 £5 – £10

Go

Reset price range






< Clear
 Up to £5
 £5 to £10
 £10 to £15
 £15 & above

Deals & Discounts
 All Discounts

Brands
 VGEBY

Seller

Results
 Check each product page for other buying options. Price and other details may vary based on product size and colour.

 <p>Sponsored</p> <p>Stretchy Non Slip Ice Cleats for Shoes and Boots, Full Wrap Ice Snow Shoe/Boot Traction Cleats with 24 Anti-Slip...</p> <p>£6⁹⁹</p> <p>FREE delivery Fri 14 Nov on your first eligible order to UK or Ireland Or fastest delivery Tomorrow, 12 Nov</p> <p>Add to basket</p>	 <p>Sponsored</p> <p>SHEEFLY Ice Grips for Shoes and Boots, Anti Slip Snow Grips Crampons Ice Cleats Traction, Upgraded Portable...</p> <p>4.5 ★★★★★ (13)</p> <p>£8⁹⁹</p> <p>Save 10% with voucher (limited sizes/colours)</p> <p>FREE delivery Fri 14 Nov on your first eligible order to UK or Ireland Or fastest delivery Tomorrow, 12 Nov</p> <p>Add to basket</p>	 <p>Sponsored</p> <p>Crampons, Ice Snow Grips, Ice Grips for Shoes Anti Slip, Ice Cleats for Shoes and Boots, Ice Grippers Winter Crampons f...</p> <p>4.1 ★★★★★ (128)</p> <p>£7⁹⁹</p> <p>FREE delivery Fri 14 Nov on your first eligible order to UK or Ireland Or fastest delivery Thu 13 Nov Only 3 left in stock.</p> <p>See options</p>	 <p>Sponsored</p> <p>Ice Shoe Grips, Walking Traction Spikes Ice Cleats for Boots Shoes Spikes Crampons Ice Grippers Traction Cleats...</p> <p>3.1 ★★★★★ (11)</p> <p>£5⁷⁸</p> <p>FREE delivery Fri 14 Nov on your first eligible order to UK or Ireland Or fastest delivery Tomorrow, 12 Nov</p> <p>Add to basket</p>	 <p>Sponsored</p> <p>1 Pair Crampons for Hiking Boots, 30 Stainless Steel Studes Non-slip Microspikes Crampons Ice Snow Grips fo...</p> <p>New on Amazon in past month</p> <p>£7⁹⁹</p> <p>FREE delivery Fri 14 Nov on your first eligible order to UK or Ireland Or fastest delivery Tomorrow, 12 Nov</p> <p>Add to basket</p> <p>5 of 24 - Clipboard</p>
--	--	---	---	---

GO Outdoors

Search GO Outdoors SEARCH

Men's Women's Children's New Walking Camping Tents Rucksacks Fishing Cycling Horse Riding

Videos | Caravanning | Blog | Travel | Books | Gift Vouchers | Duke of Edinburgh's A

WOW! DEALS OFFERS END 25TH OCTOBER

Home Men's Footwear Accessories Gaiters Men's Trekker Gaiters

Hi Gear Men's Trekker Gaiters

SALE



Enlarge

Discount Card Price
£5.00
 Retail Price £15.00

★★★★★

Colour: Navy

Quantity: 1

Collect In Town/Post

Home Del Available for H

Internatio Available for In Countries

GRIVEL Spider

★★★★★ (40) | SKU: GRI15_CRAG1_SPID

£24.05

2 in stock

Add to cart

Buy now and earn £1.20 credit on your next purchase. Learn more about EpicTV's 5% Credit Back >



PRICE MATCH GUARANTEE



GET FREE EU SHIPPING ON ORDERS OVER £40

Optional but very useful.

8. Money and what is included.

- Coach travel from WKGS to Manchester airport and return
- **Return scheduled flights** with Iceland Air
- **Full board** accommodation. Students will share a double, twin, or triple room equipped with Wi-Fi, satellite TV, en-suite bathroom.
- **Insurance** will be the school's own school journey insurance, used on other international trips arranged by WKGS and supported by the UK government (RPA).
- **Admission** to extra museums on the tour.
- **Lunch box/packed lunch** except on the days travelling to and from Iceland.
- **All travel and tours (5 in total)** including both a swim at **Blue Lagoon** and an evening swim in a geothermally heated outdoor pool in the capital.
- A trip **hoodie** with logo.

IN SHORT JUST ABOUT EVERYTHING!!



Go for 1,000 (£6.25) and 500 notes when you exchange. Avoid the big notes 10,000ISK (£62) and 5,000ISK (£31)

Currency converter

£GBR	KrICE	KrICE	£GBR
£1	170	IK50	£0.30
£2	340	IK100	£0.60
£3	510	IK150	£0.90
£4	680	IK200	£1.20
£5	850	IK300	£1.80
£6	1020	IK400	£2.40
£7	1190	IK500	£3.00
£8	1360	IK600	£3.50
£9	1530	IK700	£4.10
£10	1700	IK800	£4.70
£11	1870	IK900	£5.30
£12	2004	IK1000	£5.90
£13	2210	IK1200	£7.00
£14	2380	IK1400	£8.20
£15	2550	IK1600	£9.40
£20	3400	IK1800	£10.60
£25	4250	IK2000	£11.80
£30	5100	IK3000	£17.60
£35	5950	IK4000	£23.50
£40	6800	IK5000	£29.40
£45	7650	IK8000	£47.10
£50	8500	IK10000	£58.80
£60	10200	IK50000	£295.00

In 2025 most took between £50 and £75 spends.

- ▶ Tea and coffee is 400 – 600 ISK £2.50 to £3.50
 - ▶ Cappuccino is 500 – 800ISK £3.00 to £4.00
 - ▶ Soft drinks 400 – 600ISK £2.50 to £3.50
 - ▶ Subway sandwich 6" 1250 to 1500ISK £7.50 to £8.60
 - ▶ 12" subway 1850 to 2050ISK. £11.00 - £12.00
-
- ▶ You will buy snacks but only from BONUS or KRONAN. Remember all meals are provided apart from on the last day when a meal (Pizza slice / sandwich etc) will be required.
 - ▶ You will get a drink for free on the plane (tea / coffee / water / soft drink)
Do take this up!

Other things

- ▶ Insurance – RPA (school) organise mobile phone / ipad / ear buds insurance.
- ▶ Buddy system – we all look out for each other. We all get to know everyone else. On this trip Staff often sit on the same table as students. We are nice!!
- ▶ Mobiles – not a meal times – conversation is an art that seems to be dying out.
- ▶ Puffins / fermented shark blabber / whale meat NO but do eat everything else.
- ▶ Positivity.



						
North America Grounded NEMA 5-15	Japan Non-grounded JIS C 8303	Europe German style CEE7/4 Schuko	Europe French style Schuko	Europe/Russia Non-grounded CEE7/16 Europlug	Great Britain Grounded BS-1363	Great Britain "Shaver socket" BS-4573
						
Australia/China Grounded AS-3112	Italy Grounded CEI 23-16	Switzerland Grounded SEV-1011	Denmark Grounded SRAF 1962/DB	Israel Grounded SI 32 (IS 16A-R)	India Grounded BS-546 "Small"	South Africa Grounded BS-546 "Large"